



- *Programs Four Devices Concurrently*
- *Through-put Matches Eight-site Gang Programmers*
- *USB PC Interface, Free Lifetime S/W Updates via Web*
- *True Low-Voltage Support Down to 1.5v*
- *Optional Adapters Support Varieties of Package Types*
- *Industrial Quality, CE Approved*
- *Supports More Than 18,000 Devices*

SpeedPro-9000A

Stand-Alone Concurrent Gang Programmer

Programs FLASH, EPROMs, Micros, PICs, Serial PROMs, PLDs, etc.

HIGH SPEED

- Programs devices concurrently in a round-robin fashion: socket #1 starts to program while operator loads socket #2. Socket #1 can finish programming by the time operator finishes loading socket #4.
- Ultra high speed. Programs high-density memory devices at near theoretical limits. A 32 mega bit 28F320W18 can be programmed and verified in less than 14 seconds, meaning 4 devices within a minute, including loading and unloading.
- Auto-Run mode increases productivity by automatically starting programming upon detection of chip insertions.

WIDE RANGE OF DEVICE SUPPORT

- Supports a wide variety of device types including FLASH, EPROMs, EEPROMs, Microchip PICs, 87XX and 89XX series micros, serial PROMs, EPLDs, CPLDs, etc..
- Supports the newest and biggest memory devices, from over 128 manufacturers including AMD, Atmel, Intel, Fujitsu, Microchip, Micron, Philips, Spansion, Sharp, ST, SST, etc..
- True low voltage support down to 1.5 volts.

VERSATILE HARDWARE

- Four built-in DIP ZIF sockets, each with 48 pins.
- All four programming sockets are independent of each other. One bad device would not cause the whole programming operation to stop.

- No adapters are necessary for programming DIP packages including EPROMs, micros, PICs, CPLDs, etc. Adapters are needed only for programming non-DIP packages.
- Operates in stand-alone mode or under control of a PC via standard parallel port connection.

WIDE RANGE OF PACKAGE ADAPTERS

- Optional adapters available directly from Advin for supporting packages such as PLCC, QFP, TQFP, TSOP, PSOP, SOIC, SSOP, uBGA, etc.

FRIENDLY SOFTWARE

- PC Software included. Easy to learn and fast to operate.
- Compatible with Windows XP/NT/2000/ME/98.
- FREE software updates available over the web.

ADDITIONAL HARDWARE FEATURES

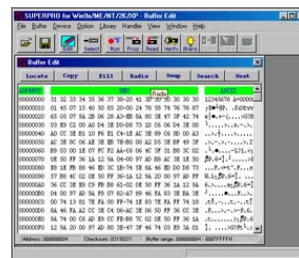
- Device insertion check and pin-contact check helps to prevent device damage from accidental operator mistakes.
- Over-current protection protects internal pin-drivers from damages caused by bad devices.
- Universal power supply automatically accepts input voltages from 90v AC to 250v AC. No need to worry about mis-selection for international users.
- ESD strap jack.

PC-HOST MODE FEATURES

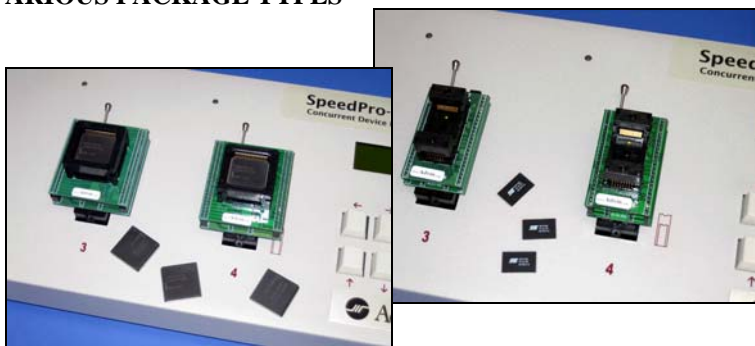
- Connects to PC via standard parallel port.
- Windows-based software provides a rich array of functions such as:
 - Full screen buffer edit in HEX and ASCII.
 - File load, save, checksum, format change.
 - Device blank check, read, verify, program.
 - Buffer edit, fill, load, checksum.
 - Buffer offset during file loading.
 - Word-wide devices: data from even address can go to low order byte (Intel-way) or high order byte (Motorola-way).
 - Special manual for setting configuration bits for special devices such as PIC micros and Altera serial PROMs.

STAND-ALONE MODE FEATURES

- Easy to use menu-based key-pad.
- 16x12 LCD display.
- 128MB flash memory (included) allows algorithms to be downloaded from PC and stored in programmer for stand-alone operations.



OPTIONAL PACKAGE ADAPTERS SUPPORT VARIOUS PACKAGE TYPES



Comes with convenient carry and storage case



SPECIFICATIONS

Low Voltage Capability:

From Vcc requirements of 6.5v down to 1.8v.

Programming Sockets:

Eight Built-in DIP sockets: Aries Zero Insertion Force (ZIF)

Optional Package Adapters:

PLCC, TSOP, QFP, TQFP, SOIC, TSSOP, uBGA, LAP, etc.

File Formats Supported

Intel HEX, Intel Extended HEX, Intel 32-bit HEX, Intel MCS, Motorola S1, S2, S3, Binary, and ASCII.

Operating Software

Menu-driven, easy-to-use software included

Power Supply

Switching power supply module, automatically adjusts to any AC voltage between 85 to 264 volts.

Power connector: International IEC connector.

Power consumption: 80 Watts.

System Requirements

PC with: Windows XP/NT/2000/98,

Hard disk with 30MB of free space, USB port.

CD drive.

Physical

Programmer dimensions: 22" x 8" x 3.5"

Programmer weight: 14 lbs (Including power supply module, power cord, USB interface cable).

Carry case dimensions: 24" x 14" x 6"

Shipping weight: 25 lbs.

Backside Connections/Openings

Connection jack for ESD strap, connector for power module, 4 CF memory card slots.

Throughput Examples

Time includes program and verify cycles, in min:sec.

Electrically erasable devices also include erase cycle.

Thru-Put = approximate maximum # of devices programmed per 8-hour day.

Device type	Size	Package	Pgmg time	Thru-Put per day
28F800B	8 Meg	48-pin TSOP	0:30	720
28F320B3	32 Meg	48-pin TSOP	1:56	220
29F040B	4 Meg	32-pin DIP	0:40	500
PIC12C508	0.5KW	8-pin DIP	0:02	1440

Warranties And Software Updates

1 year hardware warranty. Programmer is warranted to be free of manufacturing or workmanship defects for one year from the date of purchase

Free lifetime software updates via WEB.

Supplied Equipment

- SpeedPro-9000A programmer with 4 built-in 48-pin DIP ZIF sockets
- CD with Windows software and user manual
- USB interface cable to PC
- CF-128MB memory card
- Power supply module with international IEC AC power connector, USA AC power cable
- Carry case

